



Toner
Single tri-colour CMY



Print Width
Max. 81 mm (3.15")



Volume
Up to 5,000/day



Features
Presenter module (optional)



Print Speed
Up to 152.4 mm/s (6"/s)



Compatible with
Windows

Facts about the CX86e Colour Tag Printer

DTM CX86e is the world's smallest and most cost-effective LED dry toner colour label printer and helps companies to produce very durable, versatile and professional colour tags and labels. It is the ideal solution when no further processing, e.g. by means of an applicator, is required. Tags, vouchers, coupons and many more are printed on-site and can be handed out or applied immediately.

Key facts

- ▶ Dry toner LED technology
- ▶ Small, compact size
- ▶ Direct output dispensing
- ▶ Cost-saving substrates, no special coating needed
- ▶ Easy to operate, virtually maintenance-free
- ▶ UV- and scratch-resistant prints
- ▶ High print speed



Perfect for POS and kiosk solutions

Due to its compact size the CX86e is ready to use everywhere and easy to transport. As LED printheads have no moving parts, the CX86e is a robust and ultra reliable printer enabling simple application. Take your advertising campaigns, stalls and fairs to a new level by enabling customers to add personalisation on-site. If placed on your point of sale, you can print labels and tags with the name, greeting or any other personalisation directly on-demand. That will attract customer attention and increases sales.

What's in the box?

- ▶ NiceLabel Free DTM Version (Windows)
- ▶ External roll supply kit (passive label unwinder)
- ▶ CMY toner cartridge
- ▶ Instructions & sample book
- ▶ Test paper sheets for demo printing

Pro1050 | Pro1040

Pro1050



Pro1040



Toner

5 separate dry toners:
CMYK + White (Pro1050)
4 separate dry toners:
CMYK (Pro1040)



Volume

Up to 10,000/day



Print Speed

Up to 152 mm/s (6"/s)



Print Width

Max. 121,76 mm
(4.93")



Features

Print with white toner
(Pro1050)



Compatible with

Windows

Facts about the Pro1050/1040 LED Label Printer

The OKI Pro1050/1040 LED colour label printer offers new flexibility for medium to high volume colour label printing. With the unique fifth colour option "white", the Pro1050 takes creativity to a new level: transparent or coloured label materials are no longer a problem! Based on full-colour digital electrographic printing technology comprising five/four LED engines, the Pro1050/1040 prints complete rolls of labels, which can be either rewound or automatically cut into single sheets.

Key facts

- ▶ Dry toner LED technology
- ▶ CMYK + White toner (Pro1050)
- ▶ Cost-saving substrates, no special coating needed
- ▶ Easy to operate
- ▶ UV- and scratch-resistant prints
- ▶ High print speed



Easy to operate

The Pro1050/1040 is easy to set up within minutes and requires minimal training to use the flexible configuration. To simplify the installation DTM Print offers a complete solution with an all-in-one PC, approved for 24/7 nonstop operation. As well as producing brilliantly coloured product labels of all kinds, the Pro1050/1040 is also ideally suited for all industrial print jobs.

What's in the box?

- ▶ NiceLabel Free DTM Version (Windows)
- ▶ 3x4" DTM Poly PET Transparent Gloss starter roll
- ▶ CMYK + White toner cartridges (Pro1050)
- ▶ CMYK toner cartridges (Pro1040)
- ▶ Instructions & sample book

Technical Specifications – Comparison Table



	CX86e COLOUR TAG PRINTER	Pro1040 Pro1050
Print Method	Full-colour electrophotographic with three separate LED print engines	Full-colour electrophotographic with four (Pro1040) or five (Pro1050) separate LED print engines
Print Resolution	600 x 600 dpi native; up to 1200 x 1200 dpi	600 x 600 dpi native; up to 1200 x 1200 dpi
Toner	Single high capacity CMY toner cartridge, process black	Separate toner cartridges for cyan, magenta, yellow, black (CMYK) (Pro1040) and white (CMYK+W) (Pro1050)
Print Speeds	Up to 152 mm (6") per second	Up to 152 mm (6") per second
Printhead	3 LED Line Heads	4 LED Line Heads (Pro1040) or 5 LED Line Heads (Pro1050)
Colours	16.7 million	16.7 million
Colour Matching	ICC colour profiles included; ability to select Automatic, Simple Adjustment, Graphic Pro or No Colour Matching	ICC colour profiles included; ability to select Automatic, Simple Adjustment, Graphic Pro or No Colour Matching
Print Width	Max. 81 mm (3.15")	Max. 126 mm (4.95")
Media Width	25 mm - 86 mm (0.984" - 3.386")	25.4 mm - 130 mm (1" - 5.1")
Print Length	53 mm - 551 mm (2.1" - 21.7")	12.7 mm - 1320.8 mm (0.5" - 52")
Media Types	Roll-fed labels and tags, fan-fold labels or tags or single sheets (Use Genuine DTM DryToner Label Stock for a variety of approved dry toner materials.)	Roll-fed labels or tags (Use Genuine DTM DryToner Label Stock for a variety of approved dry toner materials.)
Media Sensing	Moveable see-through sensor for die-cut labels; moveable reflective sensor for labels and tags with black mark (top or bottom) and through hole (notch); can also use continuous and pre-printed labels and tags	Moveable see-through sensor for die-cut labels; moveable reflective sensor for labels and tags with black mark (top or bottom) and through hole (notch); can also use continuous and pre-printed labels and tags
Media Feed	External	Integrated external unwinder
Supply Roll	With DTM Passive Label Unwinder: 254 mm (10") maximum roll diameter on virtually any core bigger than 25.4 mm (1")	203 mm (8") maximum roll diameter on 76 mm (3") core
Cutter	Built-in guillotine cutter; cuttable media length: 53 mm - 551 mm (2.1" - 21.7")	Built-in guillotine cutter; cuttable media length: min. 102 mm (4")
Toner Level Warning	Calculates actual number of prints remaining based upon toner usage of graphics being printed.	Calculates actual number of prints remaining based upon toner usage of graphics being printed.
Operating Systems	Windows 7 - 11, Windows Server 2008, 2008 R2, 2012, 2012 R2, 2016	Windows 7 - 10, Windows Server
Data Interface	USB 2.0, Ethernet (100BASE-T/10BASE-T), WLAN (optional), GPIO control port	USB 2.0, Ethernet (1000BASE-T/10BASE-T)
Label Design Software	NiceLabel Free DTM Edition (Windows); upgrade for data import and variable data printing Can also be used with most other popular label design & graphics programs.	NiceLabel Free DTM Edition (Windows); upgrade for data import and variable data printing Can also be used with most other popular label design & graphics programs.
Power Requirements	220-240 V AC (50/60 Hz)	230 V AC (50/60 Hz)
Certifications	CE, GS, WEEE, RoHS2, REACH	UL, cUL, cULus, CE, RoHS, GS, BIS, WEEE, REACH CSA, EMC
Weight	9.5 kg	62 kg (incl. unwinder)
Dimensions (WxHxD)	198 mm x 195 mm x 380 mm	1040 mm x 477 mm x 441 mm
Operating Temperature	10 °C to 32 °C	10 °C to 30 °C
Operating Humidity	20 % to 80 % RH (non-condensing)	20 % to 70 % RH (non-condensing)
Available Versions	-	OKI Pro1040 Label Printer - with CMYK (PRO10-10001) OKI Pro1050 Label Printer - with CMYK+W (PRO10-10002)
What's in the Box	DTM CX86e Colour Tag Printer, one CMY dry toner cartridge (CX86-10020), an external roll supply kit (passive label unwinder), test paper sheets, USB 2.0 cable, EU power cord and instruction Label design software and printer driver can be downloaded from the DTM Print website.	OKI Pro1040 Four-Colour Label Printer/OKI Pro1050 Five-Colour Label Printer including unwind station, a set of four/five dry toner cartridges (PRO10-10006 - PRO10-10009/10010), one service roll 130 mm x 10-20 m (C38RHG130HIS-MKT), one starter roll 3x4" DTM Poly Transparent Gloss (L38NNPTG076102HIS-MKT), USB 2.0 cable, EU power cord and instructions Label design software and printer driver can be downloaded from the DTM Print website
Warranty	36 months (after product registration, for devices purchased in EU/EFTA countries and UK)	12 months (after product registration, for devices purchased in EU/EFTA countries and UK)
Manufacturer	DTM Print GmbH	OKI



Simplified Labelling Process

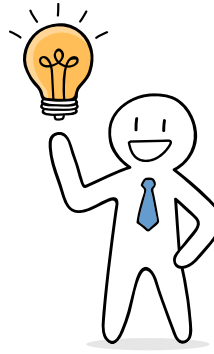
Traditional Process:

1. Design your label
2. Place an order
3. Proof and change label
4. Wait for delivery
5. Stock all of your different product labels
6. Apply labels
7. Throw away unused labels



Process with DTM Print:

1. Design your label
2. Print on-demand
3. Apply labels



Print your full-colour media

Your advantages:

- ▶ High resolution media (such as labels, tags, pouches, vouchers, etc.)
- ▶ Personalise every single print thanks to digital printing technology
- ▶ Only print the number of media you need; with no minimum quantities
- ▶ Skip delivery times and extra stock costs for different layouts
- ▶ No wastage of media after product layout changes
- ▶ Print graphics, photos, text and barcodes

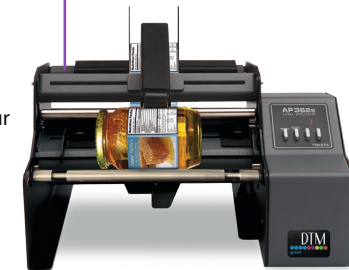
Your printed media



Apply your labels semi-automatically

Fast and easy:

- ▶ Set the guides
- ▶ Place your container in the machine
- ▶ Press footswitch or pull the arm and your label is applied



Design & print from any software

Print & design your label:

- ▶ You are free to choose any design program you prefer
- ▶ Print your labels directly from your Windows computer
- ▶ Use label design applications like NiceLabel or BarTender to take advantage of extra features, such as modified templates, variable data and any barcode type

Your finished products

